

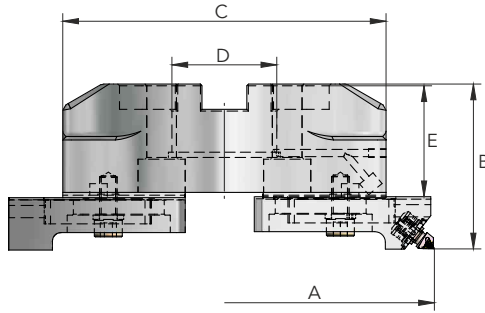
Twin Leaf Boring Bars



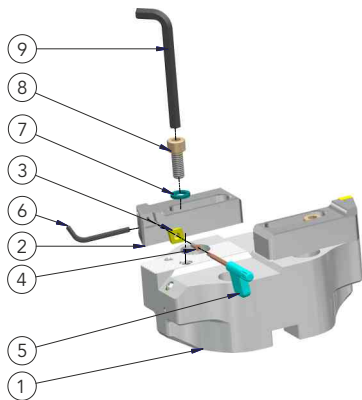
Twin Leaf Rough and Semi Finish Boring Bars

Twin Leaf Boring Bar is a versatile boring tool that can be used for any operations likes through boring, step boring & blind boring operation.

Serration design allows maximum adjustment of diameter. Cartridge replacement is easy and because of modular clamping system it gives interchangeability with adaption system.



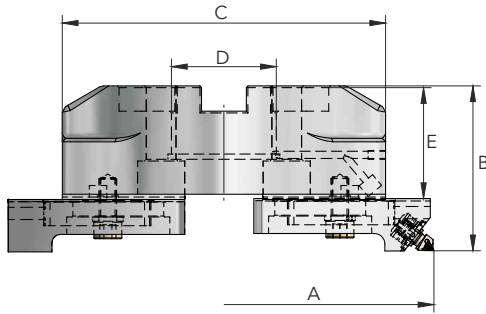
ORDERING CODE		BORING RANGE		DIAMENSIONS								WEIGHT
		A		B		C		D		E		
MM	INCH	MM	INCH	MM	INCH	MM	INCH	MM	INCH	MM	INCH	Kgs
SF-TW-B-100-01	SF-TW-B-200-01	200-280	7.87-11.02	98.8	3.89	185	7.28	60	2.36	70.0	2.76	3.40
SF-TW-B-100-02	SF-TW-B-200-02	275-355	10.83-13.98	98.8	3.89	265	10.43	60	2.36	70.0	2.76	4.17
SF-TW-B-100-03	SF-TW-B-200-03	350-430	13.78-16.93	98.8	3.89	340	13.39	60	2.36	70.0	2.76	5.07
SF-TW-B-100-04	SF-TW-B-200-04	425-505	16.73-19.88	98.8	3.89	415	16.34	60	2.36	70.0	2.76	5.64
SF-TW-B-100-05	SF-TW-B-200-05	500-580	19.69-22.83	98.8	3.89	490	19.29	60	2.36	70.0	2.76	6.90
SF-TW-B-100-06	SF-TW-B-200-06	575-655	22.64-25.79	98.8	3.89	565	22.24	60	2.36	70.0	2.76	7.90
SF-TW-B-100-07	SF-TW-B-200-07	650-730	25.59-28.74	98.8	3.89	640	25.20	60	2.36	70.0	2.76	8.70
SF-TW-B-100-08	SF-TW-B-200-08	725-805	28.54-31.69	123.8	4.87	715	28.15	60	2.36	95.0	3.74	15.30
SF-TW-B-100-09	SF-TW-B-200-09	800-880	31.50-34.65	123.8	4.87	790	31.10	60	2.36	95.0	3.74	16.80
SF-TW-B-100-10	SF-TW-B-200-10	875-955	34.45-37.60	123.8	4.87	865	34.06	60	2.36	95.0	3.74	18.10
SF-TW-B-100-11	SF-TW-B-200-11	950-1030	37.40-40.55	123.8	4.87	940	37.00	60	2.36	95.0	3.74	19.90



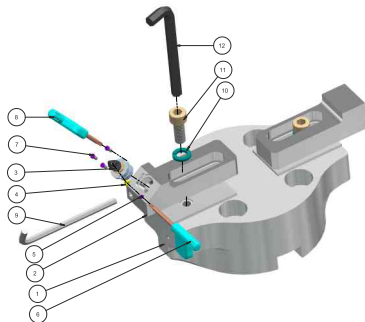
Spares For Twin Leaf - Semi Finish Boring Bar

- 1 Tool Body
- 2 Spl Cartridge
- 3 Insert
- 4 Insert Clamping Screw
- 5 Torx
- 6 Diameter Adjustment Key
- 7 Spring Washer
- 8 Cart. Clamping Screw
- 9 Cart. Clamping Bolt Key

ORDERING CODE		BORING RANGE		ALUMINIUM BRIDGE		SERRATION CARTRIDGE		INSERT	INSERT SCREW	TORX	ALLEN KEY	SPRING WASHER	ALLEN BOLT	ALLEN KEY
		A		ORDER CODE NO-1		ORDER CODE NO-2		3	4	5	6	7	8	9
MM	INCH	MM	INCH	MM	INCH	MM	INCH							
SF-TW-B-100-01	SF-TW-B-200-01	200-280	7.87-11.02	100-01A	200-01A	100-01B	200-01B	CCMT 1204..	S-CI-4.5-10.5	TK-15	AK-6	SW-10	AB-10-35	AK-8
SF-TW-B-100-02	SF-TW-B-200-02	275-355	10.83-13.98	100-02A	200-02A	100-02B	200-02B	CCMT 1204..	S-CI-4.5-10.5	TK-15	AK-6	SW-10	AB-10-35	AK-8
SF-TW-B-100-03	SF-TW-B-200-03	350-430	13.78-16.93	100-03A	200-03A	100-03B	200-03B	CCMT 1204..	S-CI-4.5-10.5	TK-15	AK-6	SW-10	AB-10-35	AK-8
SF-TW-B-100-04	SF-TW-B-200-04	425-505	16.73-19.88	100-04A	200-04A	100-04B	200-04B	CCMT 1204..	S-CI-4.5-10.5	TK-15	AK-6	SW-10	AB-10-35	AK-8
SF-TW-B-100-05	SF-TW-B-200-05	500-580	19.69-22.83	100-05A	200-05A	100-05B	200-05B	CCMT 1204..	S-CI-4.5-10.5	TK-15	AK-6	SW-10	AB-10-35	AK-8
SF-TW-B-100-06	SF-TW-B-200-06	575-655	22.64-25.79	100-06A	200-06A	100-06B	200-06B	CCMT 1204..	S-CI-4.5-10.5	TK-15	AK-6	SW-10	AB-10-35	AK-8
SF-TW-B-100-07	SF-TW-B-200-07	650-730	25.59-28.74	100-07A	200-07A	100-07B	200-07B	CCMT 1204..	S-CI-4.5-10.5	TK-15	AK-6	SW-10	AB-10-35	AK-8
SF-TW-B-100-08	SF-TW-B-200-08	725-805	28.54-31.69	100-08A	200-08A	100-08B	200-08B	CCMT 1204..	S-CI-4.5-10.5	TK-15	AK-6	SW-10	AB-10-35	AK-8
SF-TW-B-100-09	SF-TW-B-200-09	800-880	31.50-34.65	100-09A	200-09A	100-09B	200-09B	CCMT 1204..	S-CI-4.5-10.5	TK-15	AK-6	SW-10	AB-10-35	AK-8
SF-TW-B-100-10	SF-TW-B-200-10	875-955	34.45-37.60	100-10A	200-10A	100-10B	200-10B	CCMT 1204..	S-CI-4.5-10.5	TK-15	AK-6	SW-10	AB-10-35	AK-8
SF-TW-B-100-11	SF-TW-B-200-11	950-1030	37.40-40.55	100-11A	200-11A	100-11B	200-11B	CCMT 1204..	S-CI-4.5-10.5	TK-15	AK-6	SW-10	AB-10-35	AK-8



ORDERING CODE		BORING RANGE		DIAMENSIONS								WEIGHT	MBU
		A		B		C		D		E			
MM	INCH	MM	INCH	MM	INCH	MM	INCH	MM	INCH	MM	INCH	Kgs	
SF-TW-B-300-01	SF-TW-B-400-01	200-280	7.87-11.02	111.6	4.39	185	7.28	60	2.36	70	2.76	4.9	FLTA-1102
SF-TW-B-300-02	SF-TW-B-400-02	275-355	10.83-13.98	111.6	4.39	260	10.24	60	2.36	70	2.76	5.4	FLTA-1102
SF-TW-B-300-03	SF-TW-B-400-03	350-430	13.78-16.93	111.6	4.39	335	13.19	60	2.36	70	2.76	6.0	FLTA-1102
SF-TW-B-300-04	SF-TW-B-400-04	425-505	16.73-19.88	111.6	4.39	410	16.14	60	2.36	70	2.76	7.5	FLTA-1102
SF-TW-B-300-05	SF-TW-B-400-05	500-580	19.69-22.83	111.6	4.39	485	19.09	60	2.36	70	2.76	8.4	FLTA-1102
SF-TW-B-300-06	SF-TW-B-400-06	575-655	22.64-25.79	111.6	4.39	560	22.05	60	2.36	70	2.76	9.0	FLTA-1102
SF-TW-B-300-07	SF-TW-B-400-07	650-730	25.59-28.74	111.6	4.39	635	25.00	60	2.36	70	2.76	9.9	FLTA-1102
SF-TW-B-300-08	SF-TW-B-400-08	725-805	28.54-31.69	136.6	5.58	710	27.95	60	2.36	95	3.74	17.3	FLTA-1102
SF-TW-B-300-09	SF-TW-B-400-09	800-880	31.50-34.65	136.6	5.58	785	30.91	60	2.36	95	3.74	18.3	FLTA-1102
SF-TW-B-300-10	SF-TW-B-400-10	875-955	34.45-37.60	136.6	5.58	860	33.86	60	2.36	95	3.74	19.4	FLTA-1102
SF-TW-B-300-11	SF-TW-B-400-11	950-1030	37.40-40.55	136.6	5.58	935	36.81	60	2.36	95	3.74	20.5	FLTA-1102



Spares For Finish Boring Bar

- | | |
|-----------------------------------|----------------------------|
| 1 Tool Body | 8 Torx |
| 2 Spl Cartridge | 9 Diameter Adjustment Key |
| 3 Fine Boring Unit | 10 Spring Washer |
| 4 Insert | 11 Cart. Clamping Screw |
| 5 Insert Clamping Screw | 12 Cart. Clamping Bolt Key |
| 6 Torx | |
| 7 Fine Boring Unit Clamping Screw | |

ORDERING CODE		BORING RANGE		ALUMINIUM BRIDGE		SERRATION CARTRIDGE		MBU	INSERT	INSERT SCREW	TORX	MBU CLAMP SCREW	TORX	ALLEN KEY	SPRING WASHER	ALLEN BOLT	ALLEN KEY
		A		ORDER CODE NO-1		ORDER CODE NO-2											
MM	INCH	MM	INCH	MM	INCH	MM	INCH	3	4	5	6	7	8	9	10	11	12
SF-TW-B-300-01	SF-TW-B-400-01	200-280	7.87-11.02	300-01A	400-01A	300-01B	400-01B	FLTA-1102	TC.. 1102..	ST 1102-03	SIG-T7	ST 1102-29	SIG-T15	AK-5	SW-10	AM-10-35	AK-8
SF-TW-B-300-02	SF-TW-B-400-02	275-355	10.83-13.98	300-02A	400-02A	300-02B	400-02B	FLTA-1102	TC.. 1102..	ST 1102-03	SIG-T7	ST 1102-29	SIG-T15	AK-5	SW-10	AM-10-35	AK-8
SF-TW-B-300-03	SF-TW-B-400-03	350-430	13.78-16.93	300-03A	400-03A	300-03B	400-03B	FLTA-1102	TC.. 1102..	ST 1102-03	SIG-T7	ST 1102-29	SIG-T15	AK-5	SW-10	AM-10-35	AK-8
SF-TW-B-300-04	SF-TW-B-400-04	425-505	16.73-19.88	300-04A	400-04A	300-04B	400-04B	FLTA-1102	TC.. 1102..	ST 1102-03	SIG-T7	ST 1102-29	SIG-T15	AK-5	SW-10	AM-10-35	AK-8
SF-TW-B-300-05	SF-TW-B-400-05	500-580	19.69-22.83	300-05A	400-05A	300-05B	400-05B	FLTA-1102	TC.. 1102..	ST 1102-03	SIG-T7	ST 1102-29	SIG-T15	AK-5	SW-10	AM-10-35	AK-8
SF-TW-B-300-06	SF-TW-B-400-06	575-655	22.64-25.79	300-06A	400-06A	300-06B	400-06B	FLTA-1102	TC.. 1102..	ST 1102-03	SIG-T7	ST 1102-29	SIG-T15	AK-5	SW-10	AM-10-35	AK-8
SF-TW-B-300-07	SF-TW-B-400-07	650-730	25.59-28.74	300-07A	400-07A	300-07B	400-07B	FLTA-1102	TC.. 1102..	ST 1102-03	SIG-T7	ST 1102-29	SIG-T15	AK-5	SW-10	AM-10-35	AK-8
SF-TW-B-300-08	SF-TW-B-400-08	725-805	28.54-31.69	300-08A	400-08A	300-08B	400-08B	FLTA-1102	TC.. 1102..	ST 1102-03	SIG-T7	ST 1102-29	SIG-T15	AK-5	SW-10	AM-10-35	AK-8
SF-TW-B-300-09	SF-TW-B-400-09	800-880	31.50-34.65	300-09A	400-09A	300-09B	400-09B	FLTA-1102	TC.. 1102..	ST 1102-03	SIG-T7	ST 1102-29	SIG-T15	AK-5	SW-10	AM-10-35	AK-8
SF-TW-B-300-10	SF-TW-B-400-10	875-955	34.45-37.60	300-10A	400-10A	300-10B	400-10B	FLTA-1102	TC.. 1102..	ST 1102-03	SIG-T7	ST 1102-29	SIG-T15	AK-5	SW-10	AM-10-35	AK-8
SF-TW-B-300-11	SF-TW-B-400-11	950-1030	37.40-40.55	300-11A	400-11A	300-11B	400-11B	FLTA-1102	TC.. 1102..	ST 1102-03	SIG-T7	ST 1102-29	SIG-T15	AK-5	SW-10	AM-10-35	AK-8

Note : Special Designs and Sizes are Available on Request