

Polycrystalline Diamond (PCD) Tools



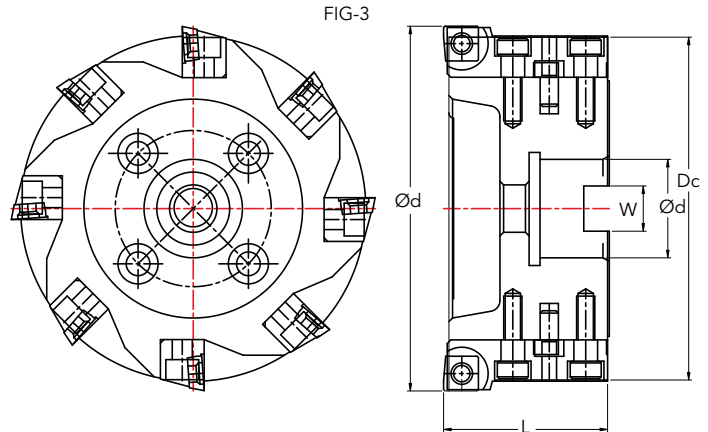
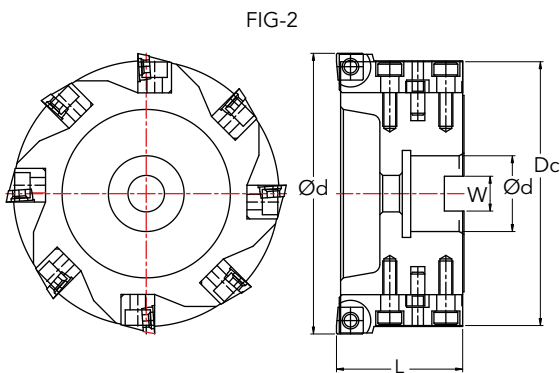
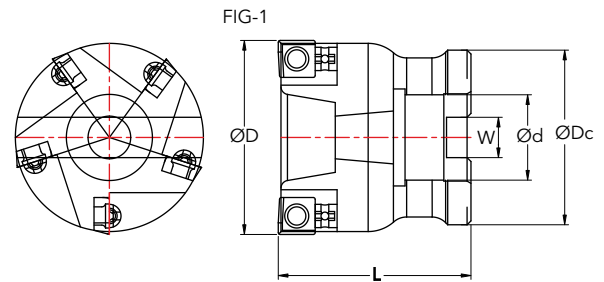
PCD Tools are very high speed and economical alternative to tungsten carbide, coated or uncoated and are designed to meet more demanding applications of non-ferrous, Copper alloys, CFRP & MMC machining.

We offer PCD Milling Cutters, PCD Turning and Milling Inserts, PCD Cartridges, Grooving Blades and Round Tools.

We can design and manufacture custom PCD Tools as per your requirement.

PCD Tools Provides :

- Adjustable radial and axial setting.
- Special high speed geometry.
- Enhanced tool life and surface finish.
- Suitable to standard adaptors.



ORDER NO	CUTTER BODY	CUTTER DIA.	NO OF INSERTS	DIMENSION (mm)				INSERT	FIG. NO.
		ØD	Z	d(H7)	W	Dc	L		
FMC-0505S	STEEL	50	5	22	10.4	45	50	SOEW 10	1
FMC-0636S	STEEL	63	6	27	12.4	55	50	SOEW 10	1
FMC-0806S	STEEL	80	6	27	12.4	55	50	SOEW 10	1
FMC-1006A	ALUMINIUM	100	8	32	14.4	95	45	SOEW 10	2
FMC-1258A	ALUMINIUM	125	10	40	16.4	120	45	SOEW 10	2
FMC-16010A	ALUMINIUM	160	12	40	16.4	155	45	SOEW 10	3

PCD Grooving Blade

BLADE	L - LENGTH	C - CENTER HEIGHT	S - WIDTH
PISTON GROOVING BLADE 	55	16	2.12
	55	16	2.21
	55	16	2.38
	55	16	2.54
	55	16	3.26
	55	16	4.05
	55	16	4.45

Note : Special Designs and Sizes are Available on Request

INSERT	DISCRIPTION	DIMENSION (mm)			
		d	s	r	L
	CCMX 060202	6.35	2.38	0.20	3.10
	CCMX 060204	6.35	2.38	0.40	3.10
	CCMX 09T302	9.525	3.97	0.20	2.80
	CCMX 09T304	9.525	3.97	0.40	2.70
	CCMX 120404	12.70	4.76	0.40	2.80
	CCMX 120408	12.70	4.76	0.80	2.70
	TCMX 06T102	3.97	2.38	0.20	2.00
	TCMX 090202	5.56	2.38	0.20	2.60
	TCMX 090204	5.56	3.97	0.40	2.30
	TCMX 110202	6.35	3.97	0.20	3.60
	TCMX 110204	6.35	4.76	0.40	3.30
	TCMX 16T304	9.525	3.18	0.40	2.90
	TCMX 16T308	9.525	3.18	0.80	2.70
	VCMX 110304	6.35	3.18	0.40	3.00
	VCMX 110308	6.35	3.18	0.80	2.70
	VCMX 160404	9.525	4.76	0.40	6.50
	VCMX 160408	9.525	4.76	0.80	5.60
	DCMX 070202	6.35	2.38	0.20	2.00
	DCMX 070204	6.35	2.38	0.40	3.70
	DCMX 11T304	9.525	3.97	0.40	2.80
	DCMX 11T308	9.525	3.97	0.80	2.40

Full Edge PCD Inserts

	TCMW 110204	6.35	3.97	0.40	
	TCMW 110208	6.35	4.76	0.80	
	TCMW 16T304	9.525	3.18	0.40	
	TCMW16T304	9.525	3.18	0.80	