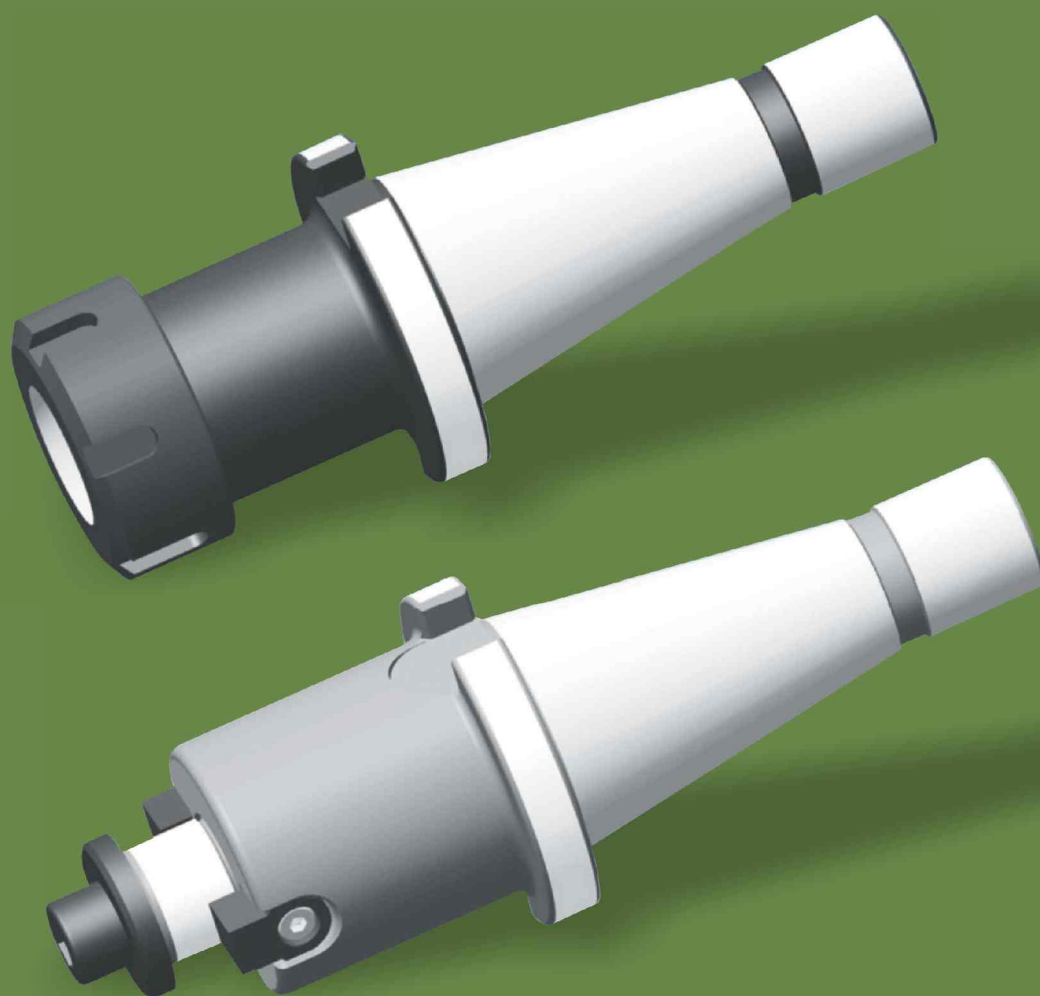


Speed of INNOVATIONS,
Feed of EXPERTISE

Din - 2080 Tool Holders

DIN - 2080 TOOL HOLDERS



Din - 2080 Tool Holders

Contents

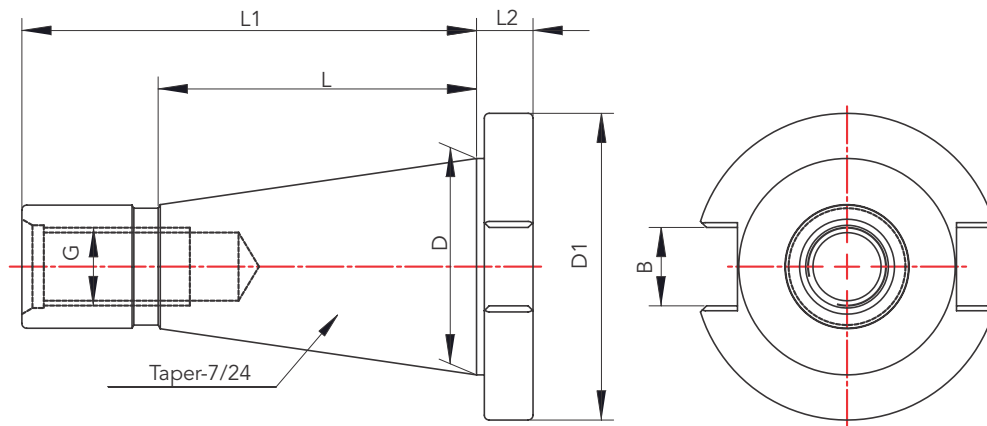
Shank Details.....155

Collet Chuck Holder - Din 6499.....156

Side Lock Holder.....157

Face Mill Holder.....158

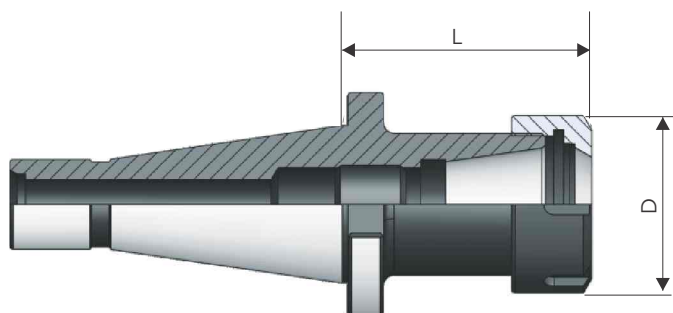
Shank Details



| Taper ISO | D | D1 | L | L1 | L2 | B | C |
|-----------|-------|-----|-------|-------|------|------|-----|
| 30 | 31.75 | 50 | 48.4 | 68.4 | 9.6 | 16.1 | M12 |
| 40 | 44.45 | 63 | 65.4 | 93.4 | 11.6 | 16.1 | M16 |
| 50 | 69.85 | 100 | 103.0 | 128.0 | 15.2 | 25.7 | M24 |

Din - 2080 Tool Holders

Collet Chuck Holder - DIN 6499



| Taper | Ordering Code | Suitable Collet | Clamping Range | L | D | Spanner | Wt. in Kgs. |
|-------|---------------|-----------------|----------------|----|----|---------|-------------|
| 30 | ISO30ER32.70 | ER32 | 2-20 | 70 | 50 | SSN.32 | 0.8 |
| 40 | ISO40ER32.70 | ER32 | 2-20 | 70 | 50 | SSN.32 | 1.3 |
| | ISO40ER40.70 | ER40 | 3-26 | 70 | 63 | SSN.40 | 1.3 |
| 50 | ISO50ER32.80 | ER32 | 2-20 | 80 | 50 | SSN.32 | 3.1 |
| | ISO50ER40.80 | ER40 | 3-26 | 80 | 63 | SSN.40 | 3.2 |

Note: Spanner Order Separately

Special Designs and Sizes are Available on Request

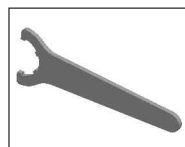
Accessories



Collet
(Pg. No.171)



Collet Nut
(Pg. No.177)



Spanner
(Pg. No.177)

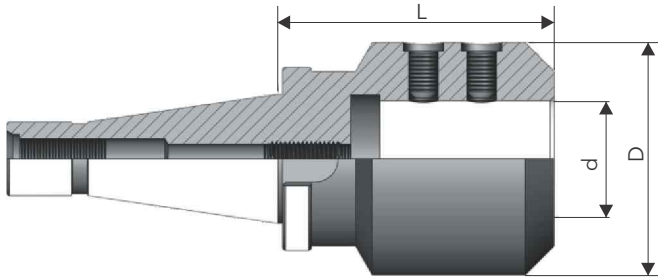


Stopper Screw
(Pg. No.187)

Din - 2080 Tool Holders

DIN-2080

Side Lock Holder



| Taper ISO | Ordering Code | d | D | L | Wt. in Kgs. |
|-----------|---------------|----|----|----|-------------|
| 40 | ISO40SLH08.45 | 8 | 24 | 45 | 1.0 |
| | ISO40SLH10.45 | 10 | 30 | 45 | 1.0 |
| | ISO40SLH12.45 | 12 | 35 | 45 | 1.0 |
| | ISO40SLH16.50 | 16 | 40 | 50 | 1.2 |
| | ISO40SLH20.50 | 20 | 50 | 50 | 1.2 |
| | ISO40SLH25.75 | 25 | 50 | 75 | 2 |
| | ISO40SLH32.90 | 32 | 60 | 90 | 2.6 |
| 50 | ISO50SLH08.50 | 8 | 24 | 50 | 2.9 |
| | ISO50SLH10.50 | 10 | 30 | 50 | 2.9 |
| | ISO50SLH12.50 | 12 | 35 | 50 | 2.9 |
| | ISO50SLH16.50 | 16 | 40 | 50 | 3.0 |
| | ISO50SLH20.63 | 20 | 50 | 63 | 3.2 |
| | ISO50SLH25.80 | 25 | 50 | 80 | 3.9 |
| | ISO50SLH32.80 | 32 | 60 | 80 | 4.1 |
| | ISO50SLH40.90 | 40 | 63 | 90 | 4.6 |

Note: Special Designs and Sizes are Available on Request

Accessories



Stopper Screw
(Pg. No.187)

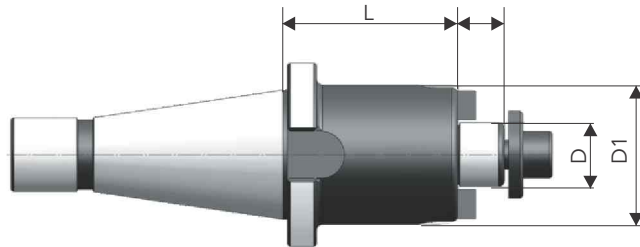


Grub Screw
(Pg. No.177)

Din - 2080 Tool Holders

DIN-2080

Face Mill Holder



| Taper ISO | Ordering Code | D | L | L1 | D1 | Cutter Dia | Wt. in Kgs. |
|-----------|---------------|----|----|----|----|------------|-------------|
| 30 | ISO30FMH22.45 | 22 | 45 | 16 | 48 | 50 & 63 | 1.0 |
| | ISO30FMH27.45 | 27 | 45 | 18 | 60 | 80 | 1.1 |
| 40 | ISO40FMH22.45 | 22 | 45 | 16 | 48 | 50 & 63 | 1.3 |
| | ISO40FMH27.45 | 27 | 45 | 18 | 60 | 80 | 1.6 |
| | ISO40FMH32.45 | 32 | 45 | 20 | 70 | 100 | 1.9 |
| 50 | ISO40FMH40.45 | 40 | 45 | 23 | 80 | 125 | 2.3 |
| | ISO50FMH22.60 | 22 | 60 | 16 | 48 | 50 & 63 | 3.3 |
| | ISO50FMH27.60 | 27 | 60 | 18 | 60 | 80 | 3.7 |
| | ISO50FMH32.60 | 32 | 60 | 20 | 70 | 100 | 4.1 |
| | ISO50FMH40.60 | 40 | 60 | 23 | 80 | 125 | 4.7 |

Note: Special Designs and Sizes are Available on Request

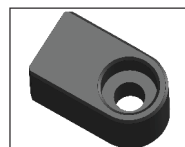
Accessories



Washer
(Pg. No.183)



Allen Screw
(Pg. No.183)



Driving Key
(Pg. No.182)



An ISO 9001-2008 and ISO 14001-2004 Company

www.sigmatoolings.com