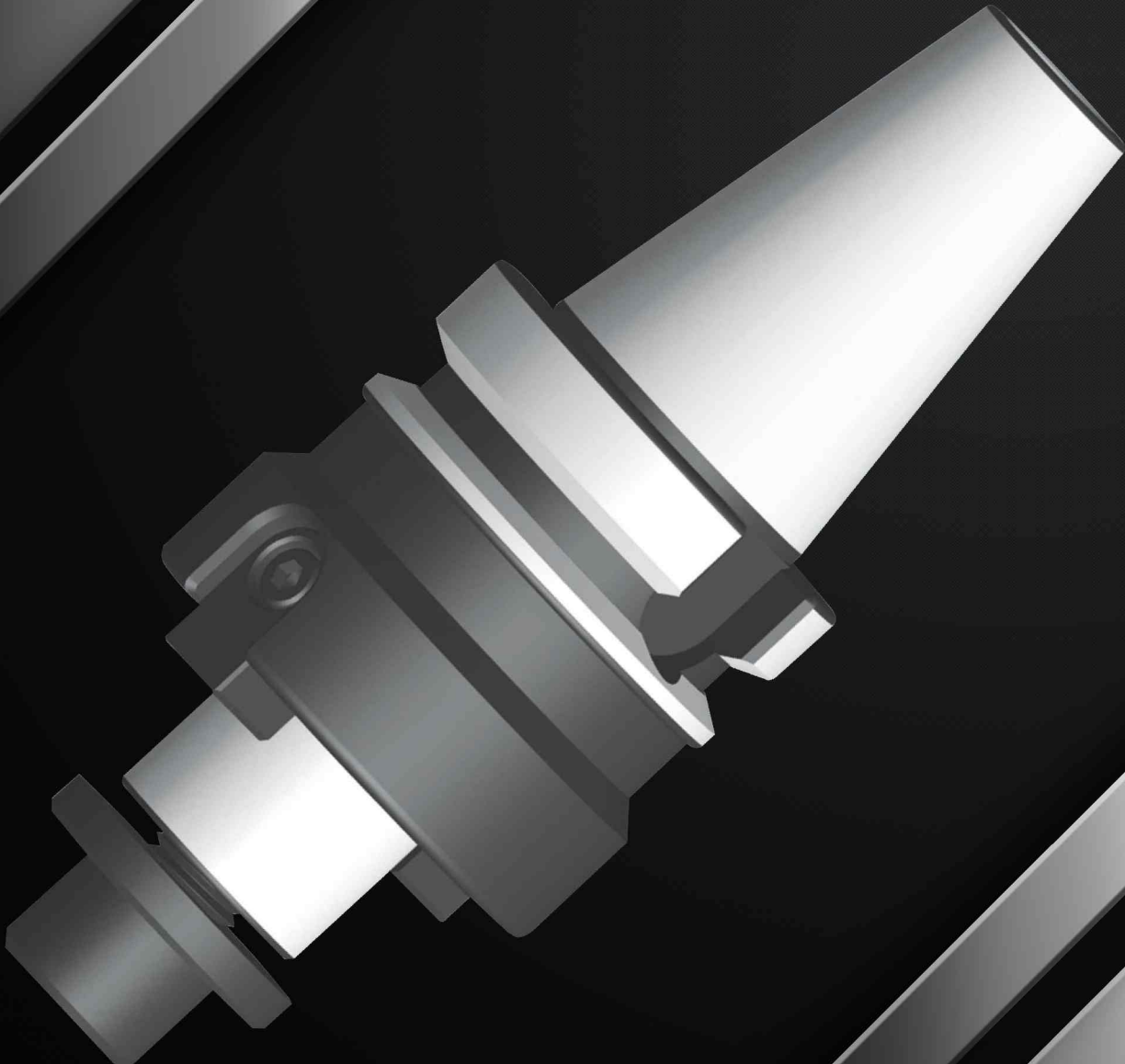
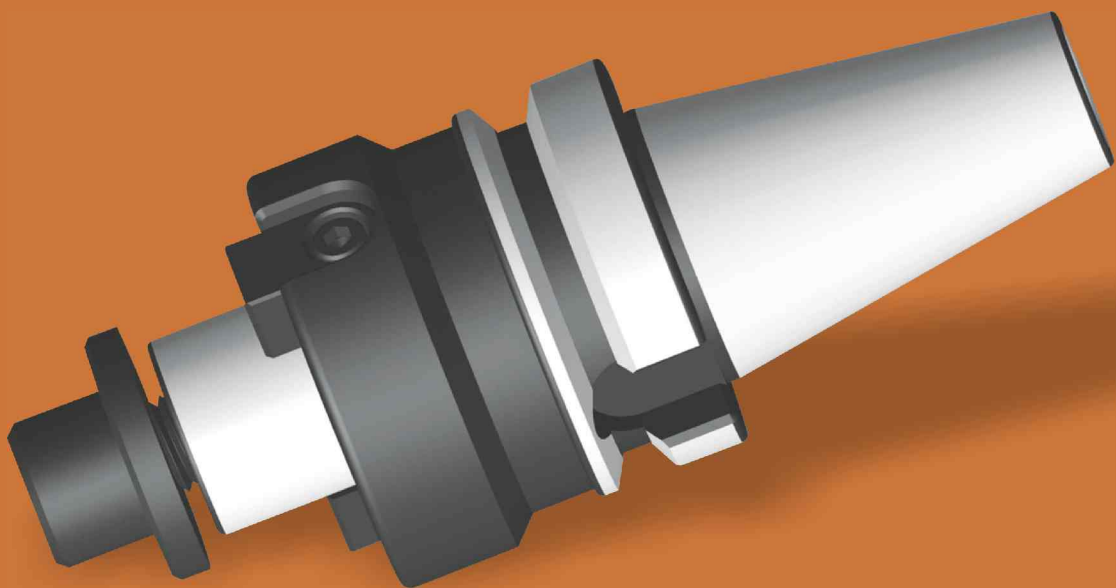




Speed of INNOVATIONS,  
Feed of EXPERTISE



# BT MAS 403 (JIS B 6363) Tool Holders



BT MAS 403 (JIS B 6363) TOOL HOLDERS

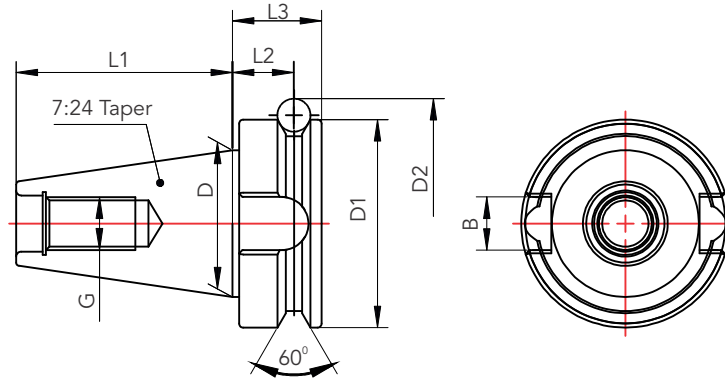
## Contents

Shank Details.....	130
Collet Chuck Holder - DIN 6499 Standard Length .....	131
Collet Chuck Holder - DIN 6499 Flange Through Coolant.....	132
Collet Chuck Holder - DIN 6499 Extra Length.....	133
Collet Chuck Holder - DIN 6499 Mini Nut.....	134
Side Lock Holder - Standard Length.....	135
Side Lock Holder - Flange Through Coolant .....	136
Side Lock Holder - Extra Length .....	137
Face Mill Holder - Through Coolant .....	138
Face Mill Holder.....	139
Face Mill Holder - Inch.....	140
Face Mill Holder - Flange Type .....	141
Morse Taper Adaptor Tanged End - Short Length .....	142
Morse Taper Adaptor Tanged End - Extra Length .....	143
Morse Taper Adaptor - Threaded End.....	144
Short Collet Chuck Holder .....	145
Reduction Adaptor.....	145
Tapping Collet Chuck Holder - DIN 6499 .....	146
Test Bar .....	146
Side & Face Cutter Arbor.....	147
Drill Chuck Holder.....	148
Thread Coupling Milling Holder .....	149
Combi Shell Mill Holder.....	150
Runout Adjustable Holder - Collect Chuck .....	151
Runout Adjustment Holder - Weldon .....	152

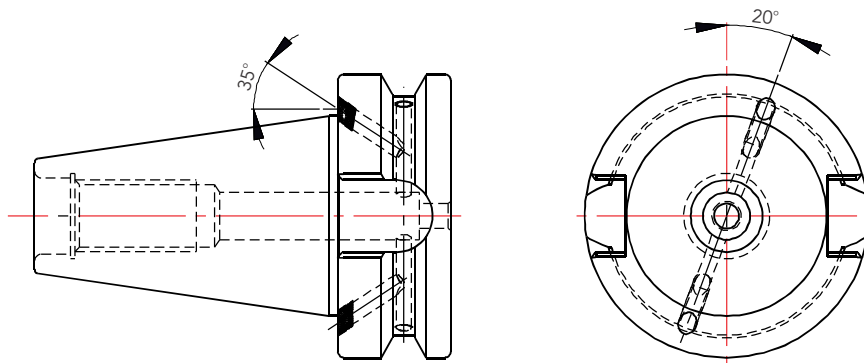
# BT MAS 403 (JIS B 6363) Tool Holders

## Shank Details

From - A



From - AD + B

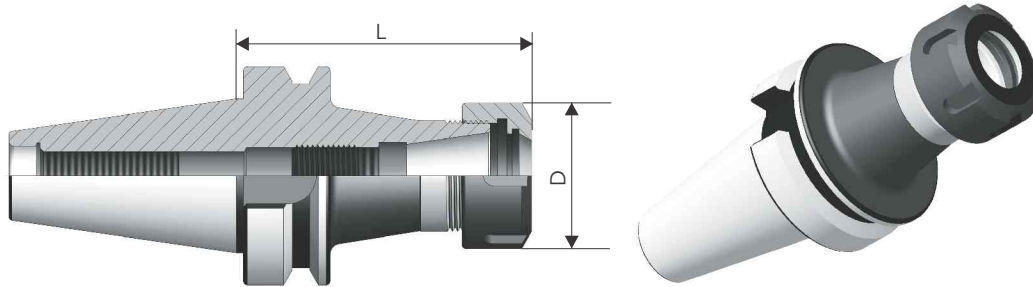


Taper	D	D1	D2	L1	L2	L3	B	G
30	31.75	46.0	56.14	48.4	13.6	22	16.1	M12
35	38.1	53.0	61.97	56.4	14.6	24	16.1	M12
40	44.45	63.0	75.68	65.4	16.6	27	16.1	M16
50	69.85	100.0	119.02	101.8	23.2	38	25.7	M24

# BT MAS 403 (JIS B 6363) Tool Holders

Collet Chuck Holder DIN 6499 - Standard Length

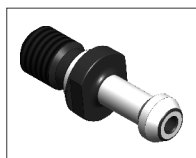
From - AD



Taper	Ordering Code	Suitable Collet	Clamping Range	L	D	Spanner	Wt. in Kgs.
30	BT30ER16.70AD	ER 16	1-10	70	28	SSN.11	0.5
	BT30ER20.70AD	ER 20	1-13	70	34	SSN.20	0.6
	BT30ER25.70AD	ER 25	1-16	70	42	SSN.25	0.7
	BT30ER32.70AD	ER 32	2-20	70	50	SSN.32	0.7
35	BT35ER16.70AD	ER 16	1-10	70	28	SSN.16	0.7
	BT35ER20.70AD	ER 20	1-13	70	34	SSN.20	0.7
	BT35ER25.70AD	ER 25	1-16	70	42	SSN.25	0.8
	BT35ER32.70AD	ER 32	2-20	70	50	SSN.32	0.9
40	BT40ER11.70AD	ER 11	1-7	70	19	SSN.11	1
	BT40ER16.70AD	ER 16	1-10	70	28	SSN.16	1.1
	BT40ER20.70AD	ER 20	1-13	70	34	SSN.20	1.1
	BT40ER25.70AD	ER 25	1-16	70	42	SSN.25	1.2
	BT40ER32.70AD	ER 32	2-20	70	50	SSN.32	1.2
	BT40ER40.70AD	ER 40	3-26	70	63	SSN.40	1.3
	BT40ER50.100AD	ER 50	10-34	100	78	SSN.50	2.1
50	BT50ER16.80M	ER 16	1-10	80	28	SSN.16	3.7
	BT50ER20.80M	ER 20	1-13	80	34	SSN.20	3.7
	BT50ER25.80M	ER 25	1-16	80	42	SSN.25	3.8
	BT50ER32.80M	ER 32	2-20	80	50	SSN.32	3.7
	BT50ER40.80M	ER 40	3-26	80	63	SSN.40	3.8
	BT50ER50.100M	ER 50	10-34	100	78	SSN.50	4.4

Note : Spanner Order Separately Special Designs and Size are Available on Request.

## Accessories



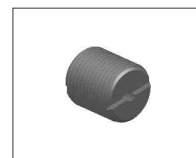
Pull Stud  
(Pg. No.175)



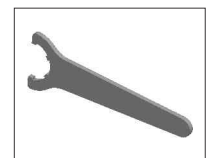
Collet  
(Pg. No.171)



Collet Nut  
(Pg. No.176)



Stopper Screw  
(Pg. No. 176)

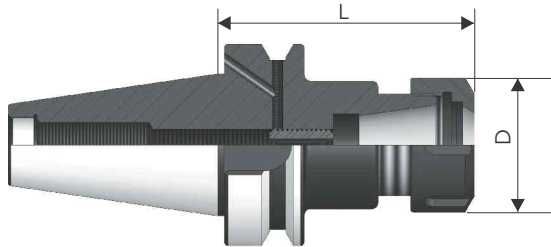


Spanner  
(Pg. No.176)

# BT MAS 403 (JIS B 6363) Tool Holders

Collet Chuck Holder - DIN 6499 Flange Through Coolant

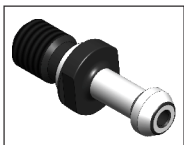
From - AD+B



Taper	Ordering Code	Suitable Collet	Clamping Range	L	D	Spanner	Wt. in Kgs.
40	BT40ER16.105FTC	Er16	1-10	105	28	SSN.16	1.2
	BT40ER20.105FTC	ER20	1-13	105	34	SSN.20	1.2
	BT40ER25.105FTC	ER25	1-16	105	42	SSN.25	1.4
	BT40ER32.100FTC	ER32	2-20	100	50	SSN.32	1.5
	BT40ER40.100FTC	ER40	3-26	100	63	SSN.40	1.8
50	BT50ER16.135FTC	ER16	1-10	135	28	SSN.16	4
	BT50ER16.150FTC	ER16	1-10	150	28	SSN.16	3.8
	BT50ER20.135FTC	ER20	1-13	135	34	SSN.20	4.2
	BT50ER20.150FTC	ER20	1-13	150	34	SSN.20	4
	BT50ER25.135FTC	ER25	1-16	135	42	SSN.25	4.1
	BT50ER25.150FTC	ER25	1-16	150	42	SSN.25	4.4
	BT50ER32.135FTC	ER32	3-20	135	50	SSN.32	4.3
	BT50ER40.135FTC	ER40	4-26	135	63	SSN.40	4.6

Note : Spanner Order Separately Special Designs and Size are Available on Request.

## Accessories



Pull Stud  
(Pg. No.175)



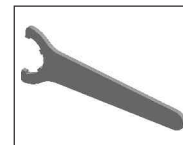
Collet  
(Pg. No.171)



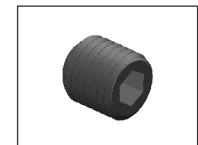
Collet Nut  
(Pg. No.173)



Stopper Screw  
(Pg. No.177)



Spanner  
(Pg. No. 177)

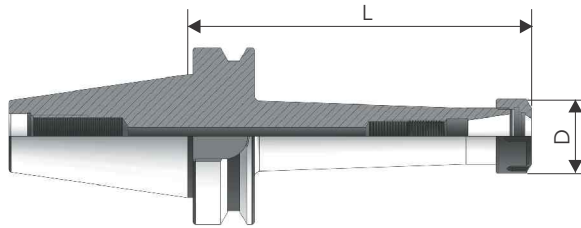


Grub Screw  
(Pg. No.177)

# BT MAS 403 (JIS B 6363) Tool Holders

Collet Chuck Holder - DIN 6499 Extra Length

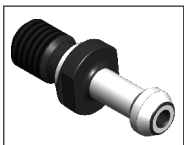
From - AD



Taper	Ordering Code	Suitable Collet	Clamping Range	L	D	Spanner	Wt. in Kgs.
40	BT40ER16.105AD	ER16	1-10	105	28	SSN.16	1.2
	BT40ER16.150AD	ER16	1-10	150	28	SSN.16	1.3
	BT40ER20.105AD	ER20	1-13	105	34	SSN.20	1.2
	BT40ER20.150AD	ER20	1-13	150	34	SSN.20	1.4
	BT40ER25.105AD	ER25	1-16	105	42	SSN.25	1.4
	BT40ER25.150AD	ER25	1-16	150	42	SSN.25	1.7
	BT40ER32.100AD	ER32	3-20	100	50	SSN.32	1.5
	BT40ER40.100AD	ER40	4-26	100	63	SSN.40	1.8
50	BT50ER16.135AD	ER16	1-10	135	28	SSN.16	4
	BT50ER16.150AD	ER16	1-10	150	28	SSN.16	3.8
	BT50ER20.135AD	ER20	1-13	135	34	SSN.20	4.2
	BT50ER20.150AD	ER20	1-13	150	34	SSN.20	4
	BT50ER25.135AD	ER25	1-16	135	42	SSN.25	4.1
	BT50ER25.150AD	ER25	1-16	150	42	SSN.25	4.4
	BT50ER32.135AD	ER32	3-20	135	50	SSN.32	4.3
	BT50ER40.135AD	ER40	4-26	135	63	SSN.40	4.6

Note : Spanner Order Separately Special Designs and Size are Available on Request.

## Accessories



Pull Stud  
(Pg. No.175)



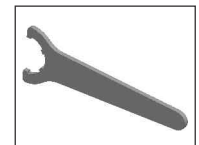
Collet  
(Pg. No.171)



Collet Nut  
(Pg. No.176)



Stopper Screw  
(Pg. No. 176)

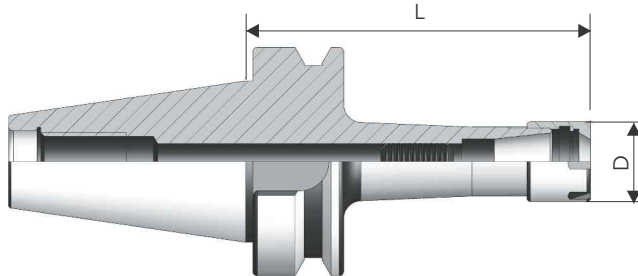


Spanner  
(Pg. No.176)

# BT MAS 403 (JIS B 6363) Tool Holders

Collet Chuck Holder - DIN 6499 Mini Nut

From - AD



Taper	Ordering Code	Suitable Collet	Clamping Range	L	D	Spanner	Wt. in Kgs.
40	BT40ER16.70M	ER16	1-10	70	22	SMN.16	1
	BT40ER16.150M	ER16	1-10	150	22	SMN.16	1.2
	BT40ER20.70M	ER20	1-13	70	28	SMN.20	1
	BT40ER20.150M	ER20	1-13	150	28	SMN.20	1.3
	BT40ER25.70M	ER25	1-16	70	35	SMN.25	1.1
	BT40ER25.150M	ER25	1-16	150	35	SMN.25	1.6
50	BT50ER16.100M	ER16	1-10	100	22	SMN.16	3.7
	BT50ER16.150M	ER16	1-10	150	22	SMN.16	3.6
	BT50ER20.100M	ER20	1-13	100	28	SMN.20	3.8
	BT50ER20.150M	ER20	1-13	150	28	SMN.20	3.9
	BT50ER25.100M	ER25	1-16	100	35	SMN.25	3.9
	BT50ER25.150M	ER25	1-16	150	35	SMN.25	4

Note: Spanner Order Separately Special Designs and Sizes are Available on Request

## Accessories



Pull Stud  
(Pg. No.175)



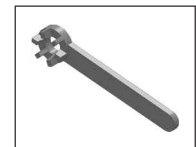
Collet  
(Pg. No.171)



Collet Nut  
(Pg. No.173)



Stopper Screw  
(Pg. No. 176)



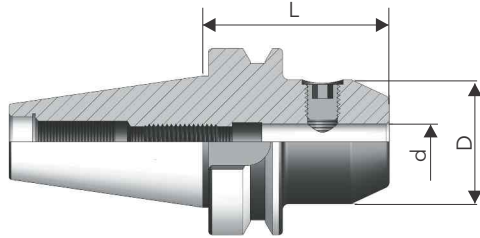
Spanner  
(Pg. No.174)



# BT MAS 403 (JIS B 6363) Tool Holders

Side Lock Holder - Standard Length

From - AD



Taper	Ordering Code	d	D	L	Wt. in Kgs.
30	BT30SLH08.65AD	8	24	65	0.5
	BT30SLH10.65AD	10	30	65	0.6
	BT30SLH12.65AD	12	35	65	0.6
	BT30SLH16.65AD	16	40	65	0.7
	BT30SLH20.90AD	20	50	90	1.2
	BT30SLH25.90AD	25	50	90	1.1
40	BT40SLH08.65AD	8	24	65	1
	BT40SLH10.65AD	10	30	65	1.2
	BT40SLH12.65AD	12	35	65	1.2
	BT40SLH16.65AD	16	40	65	1.3
	BT40SLH20.90AD	20	50	90	1.4
	BT40SLH25.90AD	25	50	90	2.4
	BT40SLH32.90AD	32	60	90	2.6
	BT40SLH40.90AD	40	53	90	3.1
50	BT50SLH08.70AD	8	28	70	3.7
	BT50SLH10.70AD	10	35	70	3.8
	BT50SLH12.80AD	12	42	80	4
	BT50SLH16.80AD	16	48	80	4
	BT50SLH20.80AD	20	52	80	4.1
	BT50SLH25.105AD	25	65	105	4.9
	BT50SLH32.105AD	32	72	105	5.1
	BT50SLH40.120AD	40	80	120	5.8
	BT50SLH50.125AD	50	125	125	7

## Accessories

Note : Special Designs and Size are Available on Request.



Pull Stud  
(Pg. No.175)



Grub Screw  
(Pg. No.178)

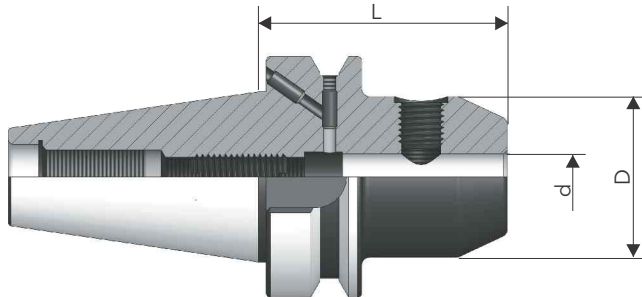


Stopper Screw  
(Pg. No.178 & 180)

# BT MAS 403 (JIS B 6363) Tool Holders

Side Lock Holder - Flange Through Coolant

From - AD+B



Taper	Ordering Code	d	D	L	Wt. in Kgs.
40	BT40SLH16.65FTC	16	40	65	1.3
	BT40SLH20.90FTC	20	50	90	1.4
	BT40SLH25.90FTC	25	50	90	2.4
	BT40SLH32.90FTC	32	60	90	2.6
	BT40SLH40.90FTC	40	63	90	3.1
50	BT50SLH08.70FTC	8	28	70	3.7
	BT50SLH10.70FTC	10	35	70	3.8
	BT50SLH12.80FTC	12	42	80	4
	BT50SLH16.80FTC	16	48	80	4
	BT50SLH20.80FTC	20	52	80	4.1
	BT50SLH25.105FTC	25	65	105	4.9
	BT50SLH32.105FTC	32	72	105	5.1
	BT50SLH40.120FTC	40	80	120	5.8
	BT50SLH50.125FTC	50	100	125	7

Note : Special Designs and Size are Available on Request.

## Accessories



Pull Stud  
(Pg. No.175)



Grub Screw  
(Pg. No.180)



Stopper Screw  
(Pg. No.180)

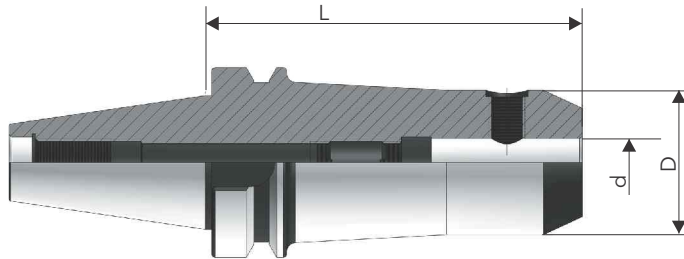


Grub Screw  
(Pg. No. 180)

# BT MAS 403 (JIS B 6363) Tool Holders

Side Lock Holder - Extra Length

From - AD



Taper	Ordering Code	d	D	L	Wt. in Kgs.
40	BT40SLH08.125AD	8	24	125	1.4
	BT40SLH10.125AD	10	27	125	1.7
	BT40SLH12.125AD	12	32	125	2
	BT40SLH16.125AD	16	36	125	2.1
	BT40SLH20.125AD	20	45	125	2.3
	BT40SLH25.125AD	25	45	125	3
	BT40SLH32.125AD	32	54	125	3.15
	BT40SLH40.125AD	40	60	125	3.5
50	BT50SLH08.150AD	8	24	150	4.2
	BT50SLH10.150AD	10	27	150	4.5
	BT50SLH12.150AD	12	32	150	4.9
	BT50SLH16.150AD	16	30	150	5.1
	BT50SLH20.160AD	20	36	160	5.53
	BT50SLH25.160AD	25	45	160	6.5
	BT50SLH32.160AD	32	45	160	7
	BT50SLH40.160AD	40	65	160	7.4

Note : Special Designs and Size are Available on Request.

## Accessories



Pull Stud  
(Pg. No.175)



Grub Screw  
(Pg. No.179)

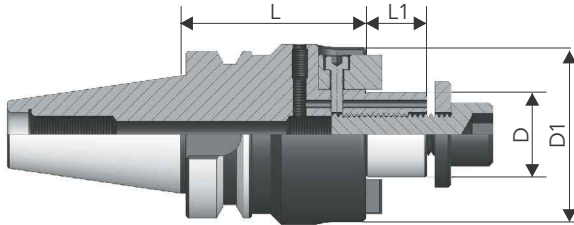


Stopper Screw  
(Pg. No.179)

# BT MAS 403 (JIS B 6363) Tool Holders

Face Mill Holder - Through Coolant

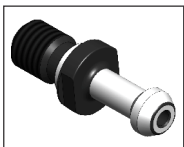
From - AD



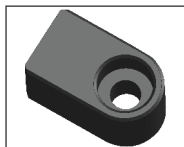
Taper	Ordering Code	D	L	L1	D1	Cutter Dia	Wt. in Kgs.
40	BT40FMH16.060AD	16	60	14	34	40	1.2
	BT40FMH16.120AD	16	120	14	34	40	1.7
	BT40FMH22.060AD	22	60	16	48	50 & 63	1.5
	BT40FMH22.090AD	22	90	16	48	50 & 63	1.9
	BT40FMH22.120AD	22	120	16	48	50 & 63	2.3
	BT40FMH27.045AD	27	45	18	60	80	1.4
	BT40FMH27.090AD	27	90	18	60	80	2.4
	BT40FMH27.105AD	27	105	18	60	80	2.7
	BT40FMH32.060AD	32	60	20	70	100	2
	BT40FMH32.090AD	32	90	20	70	100	2.7
	BT40FMH40.060AD	40	60	23	80	125	2.5
	BT40FMH40.075AD	40	75	23	80	125	2.8
50	BT50FMH22.075AD	22	75	16	48	50 & 63	4.2
	BT50FMH22.120AD	22	120	16	48	50 & 63	4.9
	BT50FMH27.060AD	27	60	18	60	80	4.2
	BT50FMH27.105AD	27	105	18	60	80	5.2
	BT50FMH32.060AD	32	60	20	70	100	4.4
	BT50FMH32.090AD	32	90	20	70	100	5.3
	BT50FMH40.060AD	40	60	23	80	125	4.8
	BT50FMH40.105AD	40	105	23	80	125	6.6

Note : Spanner Order Separately Special Designs and Size are Available on Request.

## Accessories



Pull Stud  
(Pg. No.175)



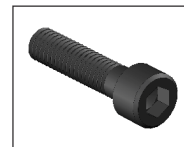
Driving Key  
(Pg. No.182)



Allen Screw  
(Pg. No.182)



Washer  
(Pg. No.182)



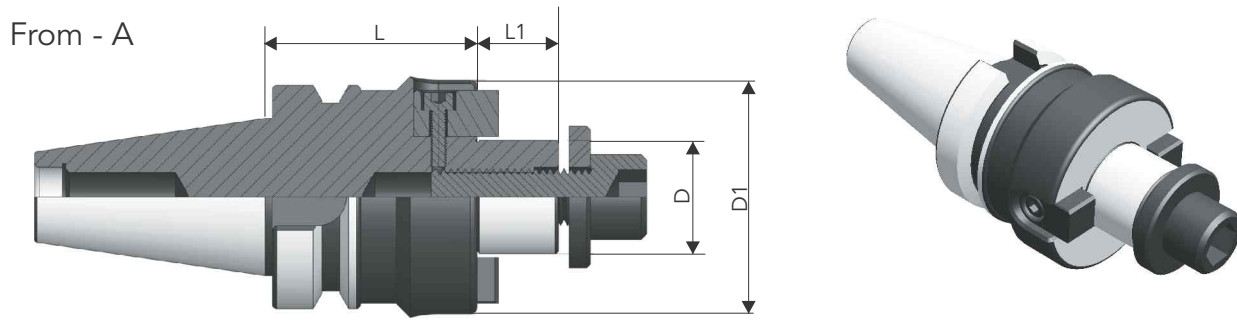
Allen Screw  
(Pg. No. 182)



Grub Screw  
(Pg. No.182)

# BT MAS 403 (JIS B 6363) Tool Holders

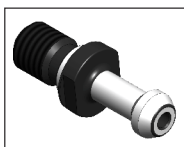
## Face Mill Holder



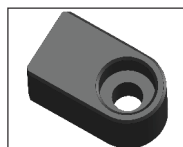
Taper	Ordering Code	D	L	L1	D1	Cutter Dia	Wt. in Kgs.
30	BT30FMH16.050A	16	50	14	34	40	0.6
	BT30FMH22.050A	22	50	16	48	50 & 63	0.8
	BT30FMH27.050A	27	50	18	60	80	1
35	BT35FMH16.050A	16	50	14	34	40	0.8
	BT35FMH22.050A	22	50	16	48	50 & 63	1
	BT35FMH27.050A	27	50	18	60	80	1.2
40	BT40FMH16.060A	16	60	14	34	40	1.2
	BT40FMH16.120A	16	120	14	34	40	1.7
	BT40FMH22.060A	22	60	16	48	50 & 63	1.5
	BT40FMH22.090A	22	90	16	48	50 & 63	1.9
	BT40FMH22.120A	22	120	16	48	50 & 63	2.3
	BT40FMH27.045A	27	45	18	60	80	1.4
	BT40FMH27.090A	27	90	18	60	80	2.4
	BT40FMH27.105A	27	105	18	60	80	2.7
	BT40FMH32.060A	32	60	20	70	100	2
	BT40FMH32.090A	32	90	20	70	100	2.7
	BT40FMH40.060A	40	60	23	80	125	2.5
	BT40FMH40.075A	40	75	23	80	125	2.8
50	BT50FMH22.075A	22	75	16	48	50 & 63	4.2
	BT50FMH22.120A	22	120	16	48	50 & 63	4.9
	BT50FMH27.060A	27	60	18	60	80	4.2
	BT50FMH27.105A	27	105	18	60	80	5.2
	BT50FMH32.060A	32	60	20	70	100	4.4
	BT50FMH32.090A	32	90	20	70	100	5.3
	BT50FMH40.060A	40	60	23	80	125	4.8
	BT50FMH40.105A	40	105	23	80	125	6.6

### Accessories

Note : Special Designs and Size are Available on Request.



Pull Stud  
(Pg. No.175)



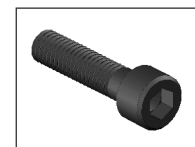
Driving Key  
(Pg. No.181)



Allen Screw  
(Pg. No.181)



Washer  
(Pg. No. 181)

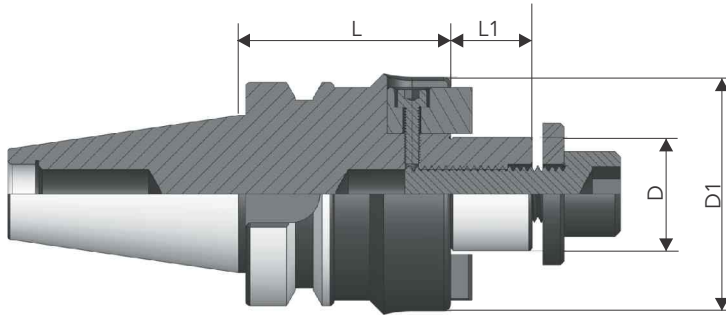


Allen Screw  
(Pg. No.181)

# BT MAS 403 (JIS B 6363) Tool Holders

## Face Mill Holder - Inch

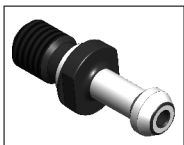
From - A



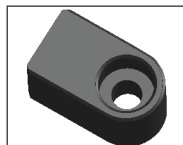
Taper	Ordering Code	D	L	L1	D1	Cutter Dia	Wt. in Kgs.
40	BT40FMH1905.60	19.05	60	17.3	44.5	2"	1.4
	BT40FMH254.60	25.4	60	17.3	57.2	3"	1.7
	BT40FMH3175.60	31.75	60	17.3	69.9	4"	2
	BT40FMH381.60	38.1	60	24	80	5"	2.8
50	BT50FMH1905.75	19.05	75	17.3	44.5	2"	4.2
	BT50FMH254.75	25.4	75	17.3	57.2	3"	4.2
	BT50FMH3175.75	31.75	75	17.3	69.9	4"	5.2
	BT50FMH381.75	38.1	75	24	80	5"	4.4

Note : Special Designs and Size are Available on Request.

### Accessories



Pull Stud  
(Pg. No.175)



Driving Key  
(Pg. No.182)



Allen Screw  
(Pg. No.182)



Washer  
(Pg. No. 182)

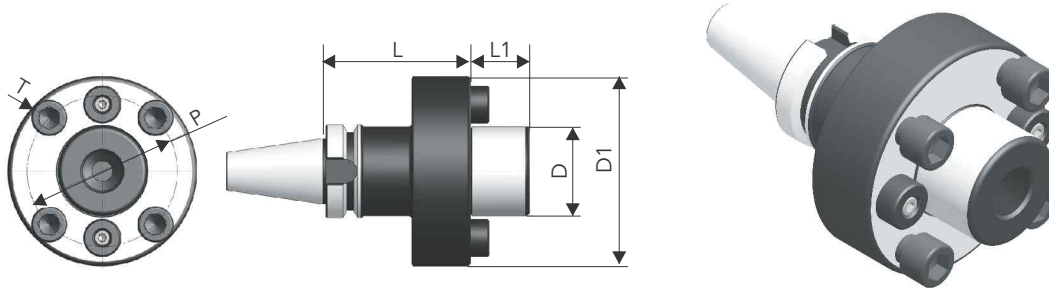


Allen Screw  
(Pg. No.182)

# BT MAS 403 (JIS B 6363) Tool Holders

Face Mill Holder - Flange Type

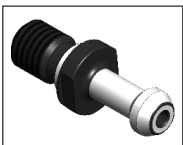
From - AD



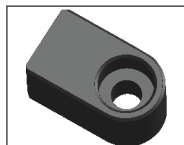
Taper	Ordering Code	D	D1	L	L1	T	P	Cutter Dia	Wt. in Kgs.
40	BT40FMH40.60FT	40	88	60	30	M 12	66.7	160	2.6
50	BT50FMH40.75FT	40	88	75	30	M 12	66.7	160	5.7
	BT50FMH60.75FT	60	128	75	40	M 16	101.6	200-500	7.6

Note : Special Designs and Size are Available on Request.

## Accessories



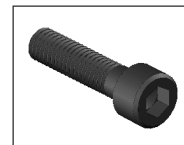
Pull Stud  
(Pg. No.175)



Driving Key  
(Pg. No.183)



Allen Screw  
(Pg. No.183)

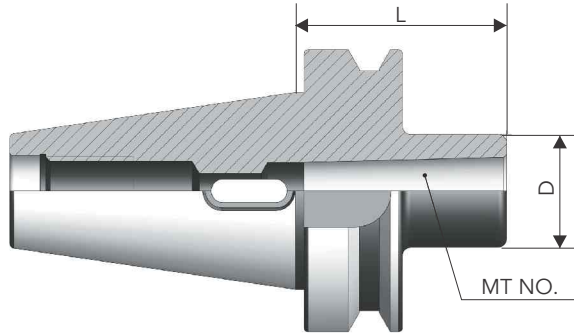


Allen Screw  
(Pg. No.183)

# BT MAS 403 (JIS B 6363) Tool Holders

Morse Taper Adaptor - Tanged End - Short Length

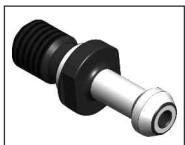
From - AD



Taper	Ordering Code	MT No.	L	D	Wt. in Kgs.
30	BT30MT1.50	1	50	25	0.4
	BT30MT2.62	2	62	32	0.5
	BT30MT3.80	3	80	40	0.7
40	BT40MT1.45	1	45	25	1
	BT40MT2.60	2	60	32	1
	BT40MT3.75	3	75	40	1.1
	BT40MT4.95	4	95	50	1.3
50	BT50MT1.45	1	45	25	3.5
	BT50MT2.45	2	45	32	3.4
	BT50MT3.45	3	45	40	3.4
	BT50MT4.75	4	75	50	3.5
	BT50MT5.105	5	105	70	4

Note : Special Designs and Size are Available on Request.

## Accessories



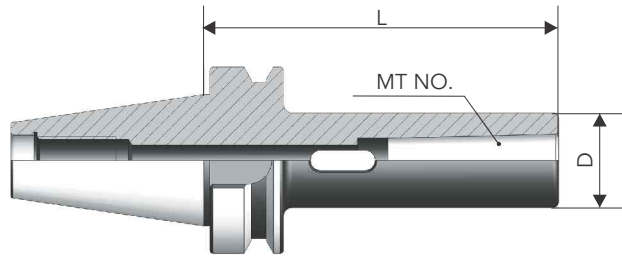
Pull Stud  
(Pg. No.175)



# BT MAS 403 (JIS B 6363) Tool Holders

Morse Taper Adaptor Tanged End - Extra Length

From - AD



Taper	Ordering Code	MT No.	L	D	Wt. in Kgs.
30	BT30MT1.120	1	120	25	0.7
	BT30MT2.120	2	120	32	0.8
	BT30MT3.135	3	135	40	1.1
40	BT40MT1.120	1	120	25	1.3
	BT40MT2.120	2	120	32	1.4
	BT40MT3.135	3	135	40	1.7
	BT40MT4.165	4	165	50	2.4
50	BT50MT1.120	1	120	25	3.9
	BT50MT1.180	1	180	25	4
	BT50MT2.135	2	135	32	4
	BT50MT2.180	2	180	32	4.3
	BT50MT3.150	3	150	40	4.3
	BT50MT3.180	3	180	40	4.7
	BT50MT4.180	4	180	50	5

Note : Special Designs and Size are Available on Request.

## Accessories

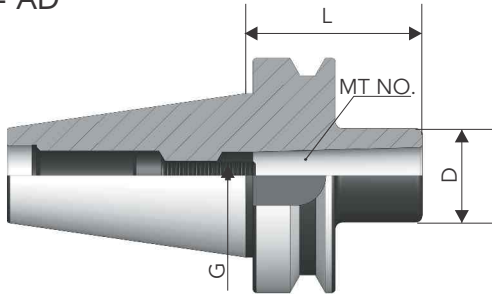


Pull Stud  
(Pg. No.175)

# BT MAS 403 (JIS B 6363) Tool Holders

Morse Taper Adaptor - Threaded End

From - AD



Taper	Ordering Code	MT No.	L	D	G	Wt. in Kgs.
40	BT40MT1M06.45	1	45	25	M6	1
	BT40MT2M10.60	2	60	32	M10	1
	BT40MT3M12.75	3	75	40	M12	1.2
	BT40MT4M16.95	4	95	50	M16	1.4
50	BT50MT1M06.45	1	45	25	M6	3.5
	BT50MT2M10.45	2	45	32	M10	3.4
	BT50MT3M12.60	3	60	40	M12	3.4
	BT50MT4M16.75	4	75	50	M16	3.5

Note : Special Designs and Size are Available on Request.

## Accessories



Pull Stud  
(Pg. No.175)

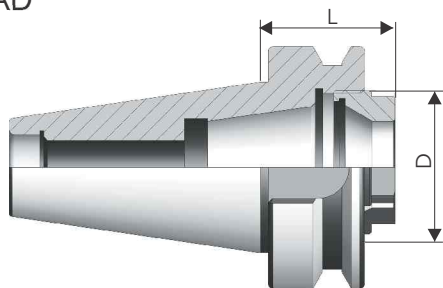


Allen Screw  
(Pg. No.182)

# BT MAS 403 (JIS B 6363) Tool Holders

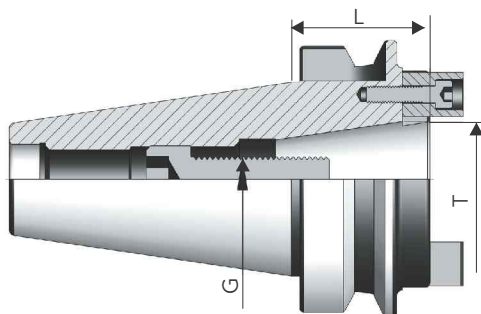
## Short Collet Chuck Holder

From - AD



Taper	Ordering Code	Suitable Collet	Clamping Range	L	D	Spanner	Wt. in Kgs.
30	BT30ER20CCH.29	ER20	1-13	29	M28x1.5	SSC.20	0.4
40	BT40ER32CCH.35	ER32	2-20	35	M40x1.5	SSC.32	0.8
50	BT50ER40CCH.45	ER40	3-26	45	M50x1.5	SSC.40	3.2

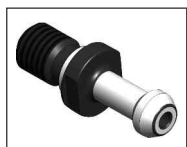
## Reduction Adaptor



Taper	Ordering Code	T	L	G	Wt. in Kgs.
40	BT40 RA BT30	BT30	60	M12	1.5
50	BT50 RA BT30	BT30	50	M12	3.9
	BT50 RA BT40	BT40	50	M16	2.7

Note : Spanner Order Separately  
Special Designs and Size are Available on Request.

## Accessories



Pull Stud  
(Pg. No.175)



Collet  
(Pg. No.171)



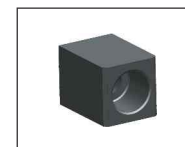
Collet Nut  
(Pg. No.181)



Spanner  
(Pg. No.181)



Allen Screw  
(Pg. No. 185)

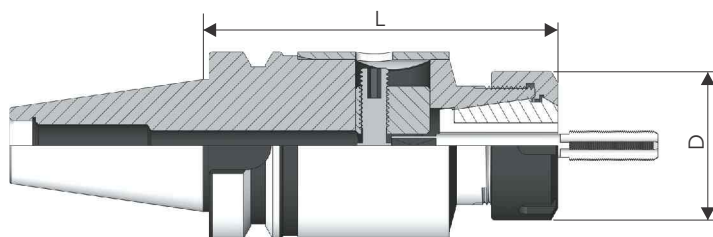


Key  
(Pg. No.185)

# BT MAS 403 (JIS B 6363) Tool Holders

Tapping Collet Chuck Holder - DIN 6499

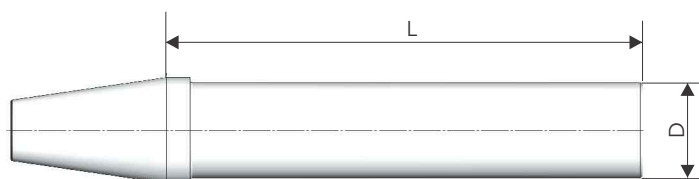
From - AD



Rigid Tapping Machines Only

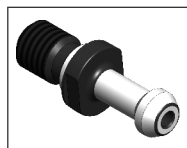
Taper	Ordering Code	Suitable Collet	Tapping Size	L	D	Spanner	Wt. in Kgs.
40	BT40ER32TCCH.125	ER32	M5 - M30	125	50	SSN.32	2.4
50	BT50ER32TCCH.135	ER32	M5 - M30	135	50	SSN.32	5

Test Bar



Taper	Ordering Code	D	L	Wt. in Kgs.
30	TEST BAR BT30	30	250	1.2
40	TEST BAR BT40	40	300	2.7
50	TEST BAR BT50	50	350	6.2

Accessories



Pull Stud  
(Pg. No.175)



Collet  
(Pg. No.171)



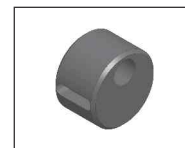
Collet Nut  
(Pg. No.177)



Stud-LH & RH  
(Pg. No.177)



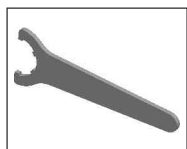
Sliding Ring-RH  
(Pg. No.177)



Sliding Ring - LH  
(Pg. No.177)



Outer Bush  
(Pg. No.177)



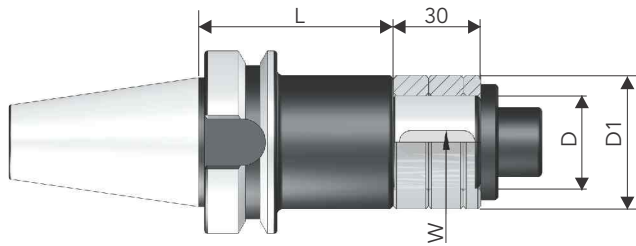
Spanner  
(Pg. No.177)



Grub Screw  
(Pg. No.177)

# BT MAS 403 (JIS B 6363) Tool Holders

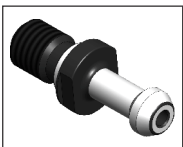
## Side & Face Cutter Arbor



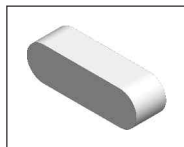
Taper	Ordering Code	D	L	D1	W	Wt. in Kgs.
40	BT40SFCA16.075	16	75	26	4	1.3
	BT40SFCA16.105	16	105	26	4	1.4
	BT40SFCA22.075	22	75	34	6	1.6
	BT40SFCA22.120	22	120	34	6	1.9
	BT40SFCA27.075	27	75	40	7	1.7
	BT40SFCA27.120	27	120	40	7	2.2
	BT40SFCA32.090	32	90	46	8	2
50	BT50SFCA16.090	16	90	26	4	4
	BT50SFCA16.120	16	120	26	4	4.1
	BT50SFCA22.090	22	90	34	6	4.2
	BT50SFCA22.135	22	135	34	6	4.6
	BT50SFCA27.090	27	90	40	7	4.4
	BT50SFCA27.135	27	135	40	7	4.9
	BT50SFCA32.090	32	90	46	8	4.7
	BT50SFCA32.135	32	135	46	8	5.4
	BT50SFCA40.090	40	90	55	10	5.3
	BT50SFCA40.135	40	135	55	10	6.1

Note : Special Designs and Size are Available on Request.

### Accessories



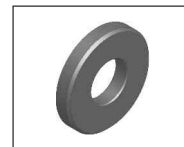
Pull Stud  
(Pg. No.175)



Parallel Key  
(Pg. No.184)



Spacer  
(Pg. No.184)



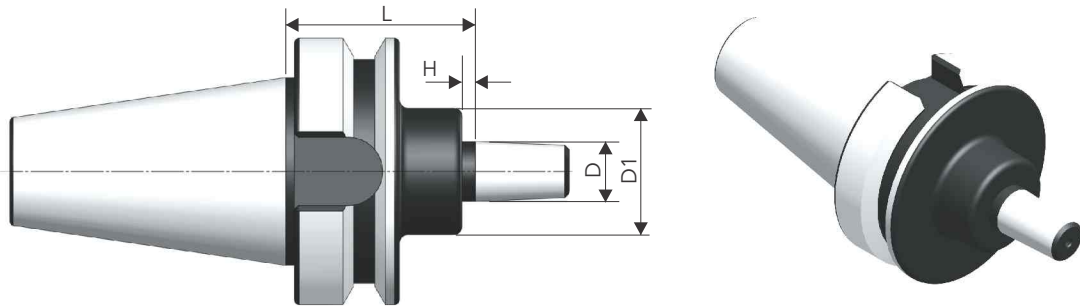
Washer  
(Pg. No. 184)



Allen Screw  
(Pg. No.184)

# BT MAS 403 (JIS B 6363) Tool Holders

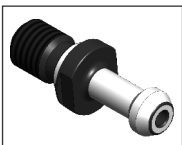
## Drill Chuck Holder



Taper	Ordering Code	Keyless Chuck Clamping Range	Taper No	L	D	D1	H	Wt. in Kgs.
40	BT40DCH1.45	0-3	JTA1	45	9.754	30	3	1
	BT40DCH2.45	0-6	JTA2	45	14.199	30	4	1
	BT40DCH6.45	0.8-13	JTA6	45	17.170	30	4	1.1
	BT40DCH12.45	0-6	B12	45	12.065	30	3	1.1
	BT40DCH16.45	0.8-13	B16	45	15.733	30	4	1.1
50	BT50DCH1.45	0-3	JTA1	45	9.754	30	3	3.7
	BT50DCH2.45	0-6	JTA2	45	14.199	30	4	3.7
	BT50DCH6.45	0.8-13	JTA6	45	17.170	30	4	3.7
	BT50DCH12.45	0-6	B12	45	12.065	30	3	3.7
	BT50DCH16.45	0.8-13	B16	45	15.733	30	4	3.7

Note : Special Designs and Size are Available on Request.

### Accessories

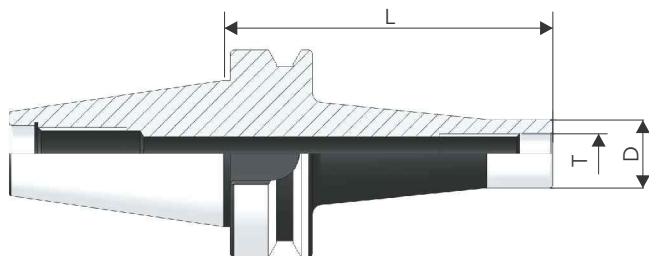


Pull Stud  
(Pg. No.175)

# BT MAS 403 (JIS B 6363) Tool Holders

Threaded Coupling Milling Holder

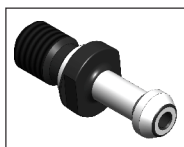
From - AD



Taper	Ordering Code	T	L	D	Wt. in Kgs.
40	BT40TCMH08.60	M8	13	60	1
	BT40TCMH08.90	M8	13	90	1
	BT40TCMH10.60	M10	18	60	1
	BT40TCMH10.100	M10	18	100	1.1
	BT40TCMH12.90	M12	21	90	1
	BT40TCMH12.100	M12	21	100	1.2
	BT40TCMH16.90	M16	29	90	1
	BT40TCMH16.100	M16	29	100	1.2
50	BT50TCMH08.90	M8	13	90	3.7
	BT50TCMH10.90	M10	18	90	3.7
	BT50TCMH12.90	M12	21	90	3.8
	BT50TCMH16.90	M16	29	90	4

Note : Special Designs and Size are Available on Request.

## Accessories

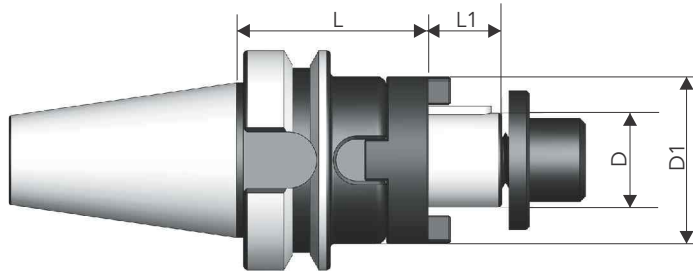


Pull Stud  
(Pg. No.175)

# BT MAS 403 (JIS B 6363) Tool Holders

Combi Shell Mill Holder

From - AD



Taper	Ordering Code	D	D1	L	L1	Wt. in Kgs.
40	BT40CSMH16.55	16	32	55	27	1.2
	BT40CSMH22.55	22	40	55	31	1.3
	BT40CSMH27.55	27	48	55	33	1.4
	BT40CSMH32.60	32	58	60	38	1.7
	BT40CSMH40.70	40	70	70	41	2.6
50	BT50CSMH16.70	16	32	70	27	3.8
	BT50CSMH22.70	22	40	70	31	4
	BT50CSMH27.70	27	48	70	33	4.1
	BT50CSMH32.70	32	58	70	38	4.4
	BT50CSMH40.70	40	70	70	41	5

Note : Special Designs and Size are Available on Request.

## Accessories



Pull Stud  
(Pg. No.175)



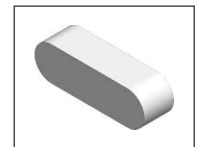
Washer  
(Pg. No.183)



Allen Screw  
(Pg. No.183)



Drive Ring  
(Pg. No.183)



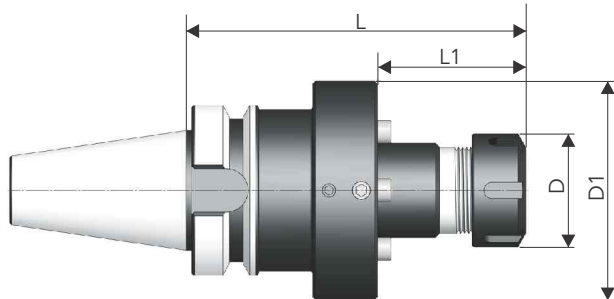
Parallel Key  
(Pg. No.183)



# BT MAS 403 (JIS B 6363) Tool Holders

Runout Adjustable Holder - Collect Chuck

From - AD



Taper	Ordering Code	Suitable Collet	Clamping Range	D	D1	L	L1	Wt. in Kgs.
40	BT40RAHER25.125	ER-25	1-16	42	63	125	55	1.8
	BT40RAHER25.125	ER-25	1-16	42	81	125	55	2.5
50	BT50RAHER25.130	ER-25	1-16	42	81	130	55	4.5

Note : Spanner Order Separately  
Special Designs and Size are Available on Request.

## Accessories



Pull Stud  
(Pg. No.175)



Collet Chuck Adaptor  
(Pg. No.187)



Adjusting Ring  
(Pg. No.187)



Allen Screw  
(Pg. No.187)



Set Screw  
(Pg. No. 187)



Collet Nut  
(Pg. No.187)



Spanner  
(Pg. No.187)

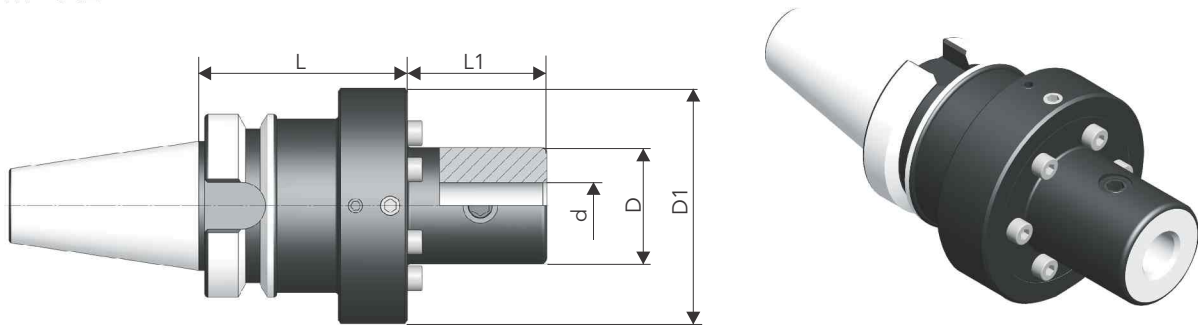


Stopper Screw  
(Pg. No.187)

# BT MAS 403 (JIS B 6363) Tool Holders

Runout Adjustable Holder - Weldon

From - AD



Taper	Ordering Code	d	D	D1	L	L1	Wt. in Kgs.
40	BT40RAH12.120	12	35	81	120	48	2.5
	BT40RAH16.120	16	40	81	120	48	2.5
	BT40RAH20.120	20	50	81	120	48	2.7
	BT40RAH25.130	25	50	81	130	58	2.7
50	BT50RAH12.130	12	35	81	130	48	4.7
	BT50RAH16.130	16	40	81	130	48	4.8
	BT50RAH20.130	20	50	81	130	48	4.9
	BT50RAH25.140	25	50	81	140	58	4.9
	BT50RAH32.150	32	60	115	150	55	7.4
	BT50RAH40.160	40	70	115	160	65	7.7

Note : Special Designs and Size are Available on Request.

## Accessories



Pull Stud  
(Pg. No.175)



End Mill Adaptor  
(Pg. No.186)



Adjusting Ring  
(Pg. No.186)



Allen Screw  
(Pg. No.186)



Set Screw  
(Pg. No.186)



Grub Screw  
(Pg. No.186)



An ISO 9001-2008 and ISO 14001-2004 Company

[www.sigmatoolings.com](http://www.sigmatoolings.com)